



fortil Care



Our model	4
Our locations	5
Our fields of work	7
Biotechnologies	8
Pharmaceutics, cosmetics and fine chemicals	9
Medical devices	10
Research & Animal Research	11
Hospitals	11
Our industrial services	13
Engineering & Commissioning	14
QHSES & Compliance	15
Support exploitation & Distribution	16
Digital Transformation	17
Our delivery models	
On Site Contracting	18
Technical Expertise Hub	18
Service Hub	19
Work Package	19
Quality policy & Certifications	20
Our HR vision	23





Founded in 2009, the Fortil model was brought into being by entrepreneurial engineers. We accompany our clients on their engineering and digital transformation projects through a set of solutions which has been developed to respond to the key challenges.

We base our development on a strong model that combines expansion and independence. Over the last 10 years, our services and our geographical presence have evolved, bringing us as close as possible to our clients and increasing our level of expertise. At the same time, we have been careful to keep the essence of the Fortil project. Although we currently find ourselves in a significant phase of expansion, the high standards of our projects and recruitment remain as demanding as ever. Quality will always take precedence over quantity, as we prefer excellence to ease.

Our ambition is to become the largest independent engineering group in Europe, working to serve future generations.

In order to reach this goal, we work daily to succeed in our four core foundations.

Profit-making performance and independent growth.

Ever since our inception, we have never needed any third-party loans or investment in order to grow. Our development has been solely based on our own funds. It is the engagement of our employees, their inclusion in the model, our level of excellence and the success of our work which will enable us to keep this independence.

Experts working to serve engineering and innovation.

We base the strength of our services on the expertise of our engineers. We are demanding, we strive for excellence and we recruit employees who share this conscientiousness.

A transparent and efficient organisation.

We have opted for a simple tree structure in our roles, aimed at development and performance. Our interpersonal pact, friendly competition between roles and the sharing of responsibilities are naturally opposed to bureaucracy and the stagnation of flows.

A responsible vision.

The challenges faced by our employees are at the heart of our model, in which the inclusion, development and emancipation of each individual acts as its cement. Our mission strives to secure the sustainability and positive evolution of their ecosystem through our HR and CSR policies.

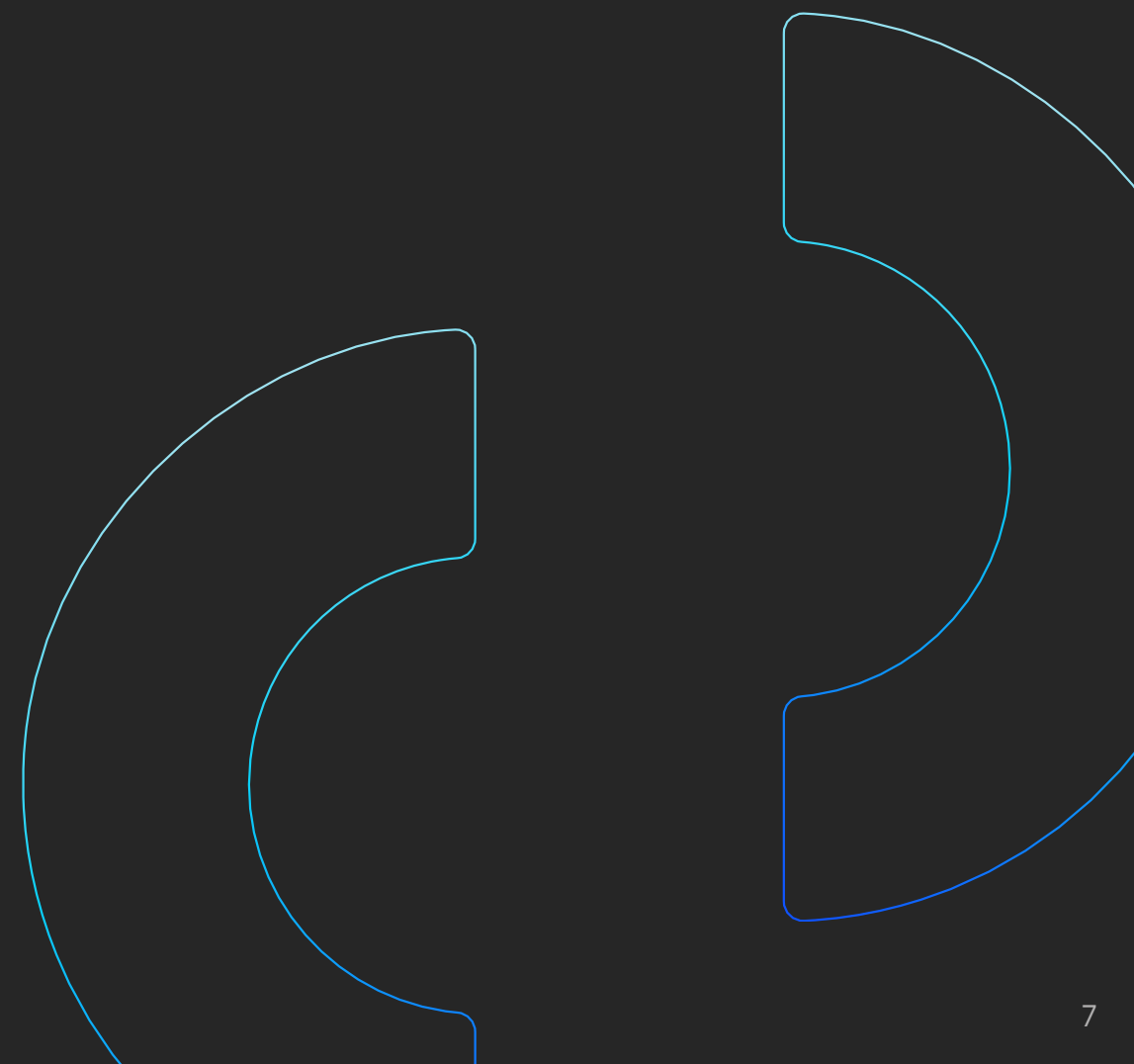


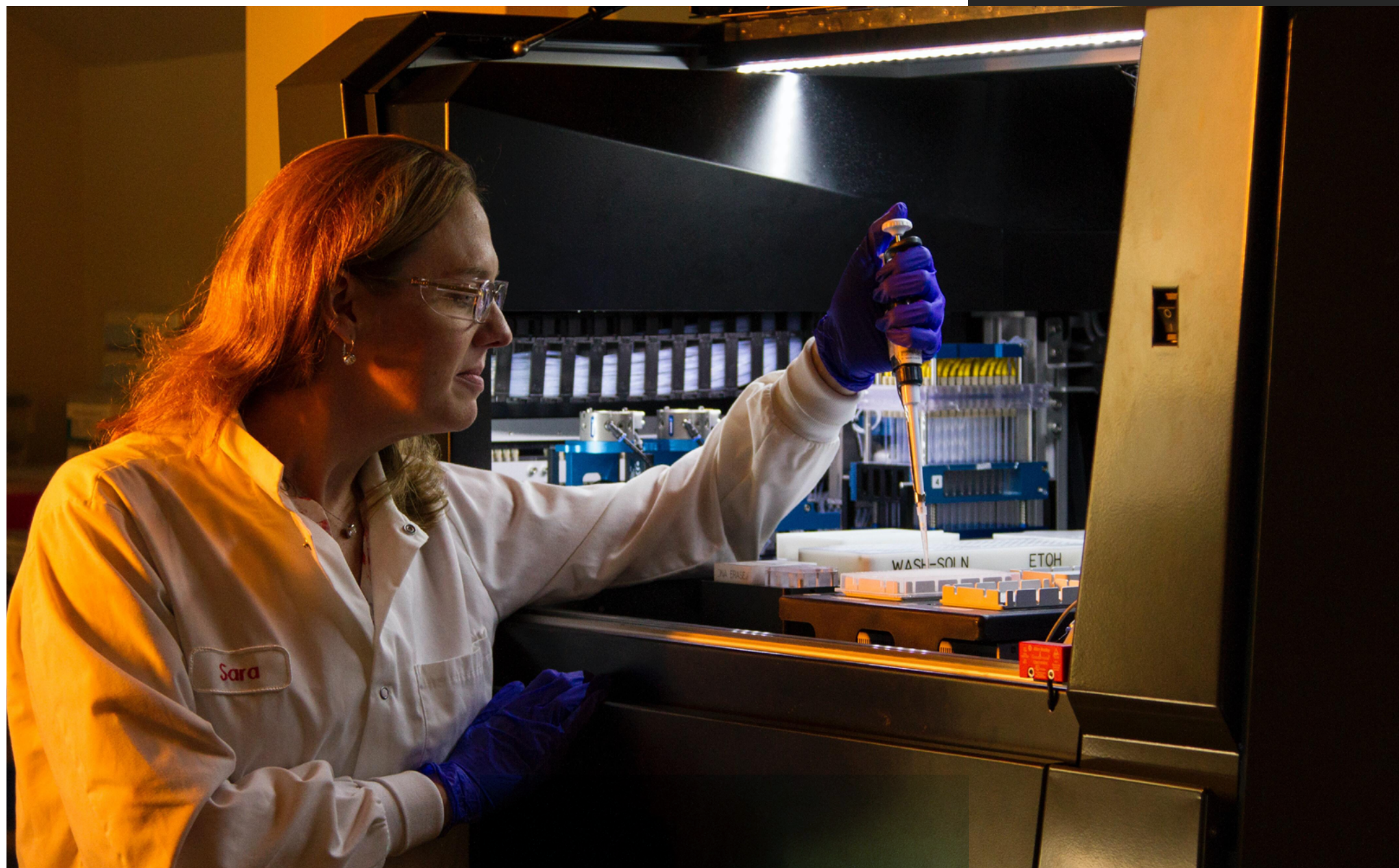
Design and engineering office in Lyon which provides its expertise throughout all over the world



Our fields of work

Our involvement includes every stage from development, industrialisation, production, and distribution to monitoring. We integrate the skills of engineering, CQV, quality assurance, regulatory matters, production support, maintenance and supply chain.





Pharmaceuticals, cosmetics and fine chemicals

Our teams are in a position to intervene on all **pharmaceutical dosage forms** (sterile liquids, non-sterile liquids, dry forms and paste forms) as well as all kinds of chemical substances (volatile substances, CMR chemicals, etc.)

- Alcohol production line design
- Primary and secondary packaging line
- Regulation expertise: ATEX, BPF, GMP
- Onsite cleaning integration and method validation
- Integration of the constituent: Powder or liquid transfer
- Production follow-up of constituents manufactured
- Design and follow-up of production equipment
- Sizing of transfer lines
- Controlled environment areas

Biotechnologie

Strengthened by our expertise in upstream & downstream, **we accompany our clients in deploying new biomedicine production units.**

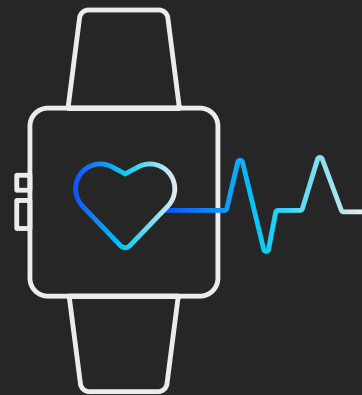
- Vaccines
- Viral vectors
- ATMP: Advanced therapy medicinal products
- Monoclonal antibodies
- Genetically modified organisms
- Recombinant proteins
- Cell or gene therapy and all other medicine stemming from living things
- Enclosed facilities (BSL1-BSL4)



Medical Devices

Our engineers are used to working in complex regulatory environments, and are therefore in a position to accompany you in the maintenance or implementation of your medical devices. The implementation of the new regulation on medical devices and IVD medical devices 2017/745 and 2017/746 is a new challenge for businesses. We decided to jump ahead on implementing this and on accompanying you on this change.

Moreover, our knowledge on controlled environment areas, quality management systems (ISO 13485) and on its uses is an advantage for your infrastructure projects. Our innovation pole is in a position to design your future devices.



Research & Animal Research

We work in both public and private research laboratories. We provide the turnkey design, work follow-up and handover of your laboratories in consideration of the regulatory constraints on your activities. Our strong experience in the design and development of research animal care, and our skills in contamination control, in forward shifting and in quarantine guarantee security in your testing protocols.

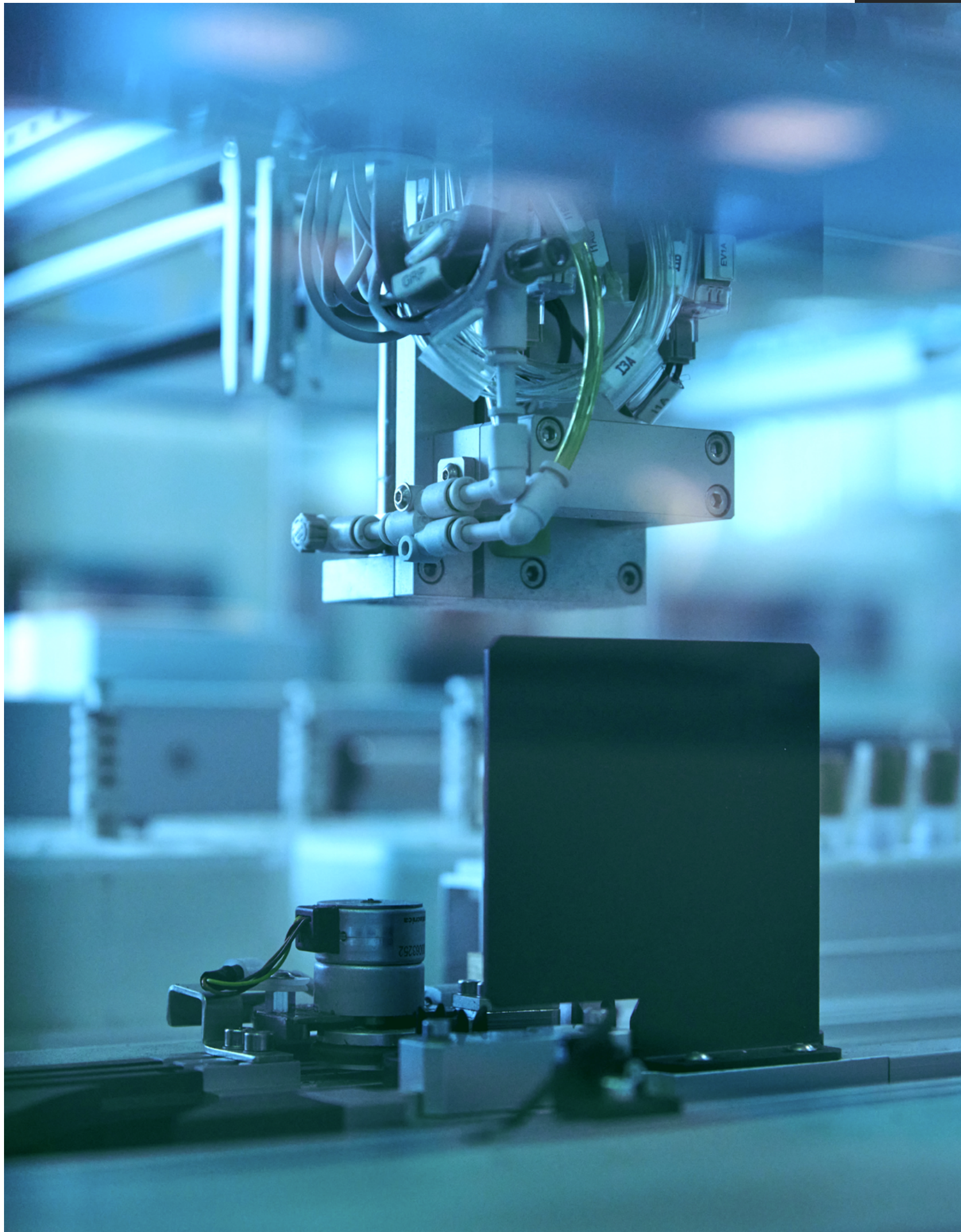
- Conventional or EOPS/SPF
- Quarantine level A1 to A3



Hospitals

Our engineers work within hospital sector services for your infrastructure plans and biomedicine equipment investment. Our involvement is made secure by designing solutions that guarantee contamination control. We break new ground by deploying modern technologies such as robotic assistance and interventional radiology. And finally, we employ an ecological basis by providing and qualifying highly energy efficient solutions for hospital operational systems. We work in all hospital services :

- Operating theatres
- Recovery rooms
- Endoscopies
- Sterilisation
- Medical imaging



Key Issues



Engineering & Commissioning

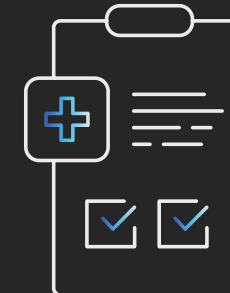
We provide expertise on all engineering and commissioning activities (FAT / SAT).

- Process : Mechanical, robotic, mechatronics, general installation, equipment and production line
- Utilities : black & clean
- Electricity (CFO/CFA) and Automation
- HVAC/CVC
- Project Management
- Infrastructure

To take a project to completion, the group uses design tools adapted to each activity. To make plans (BFDs, PIDs, flow charts, and functional diagrams) we use Autodesk, Autocad, Aveva E3D and Hakobio. For civil engineering and BIM, we use Autodesk REVIT. For calculating piping, flexibility and expansion, our experts use CAESAR II. For simulating processes and mechanical design, we use PROSIM and Solidworks.

Using these material resources enables us to create added value thanks to the expertise of our employees in using these applications, and it also enables us to respond to all your needs.

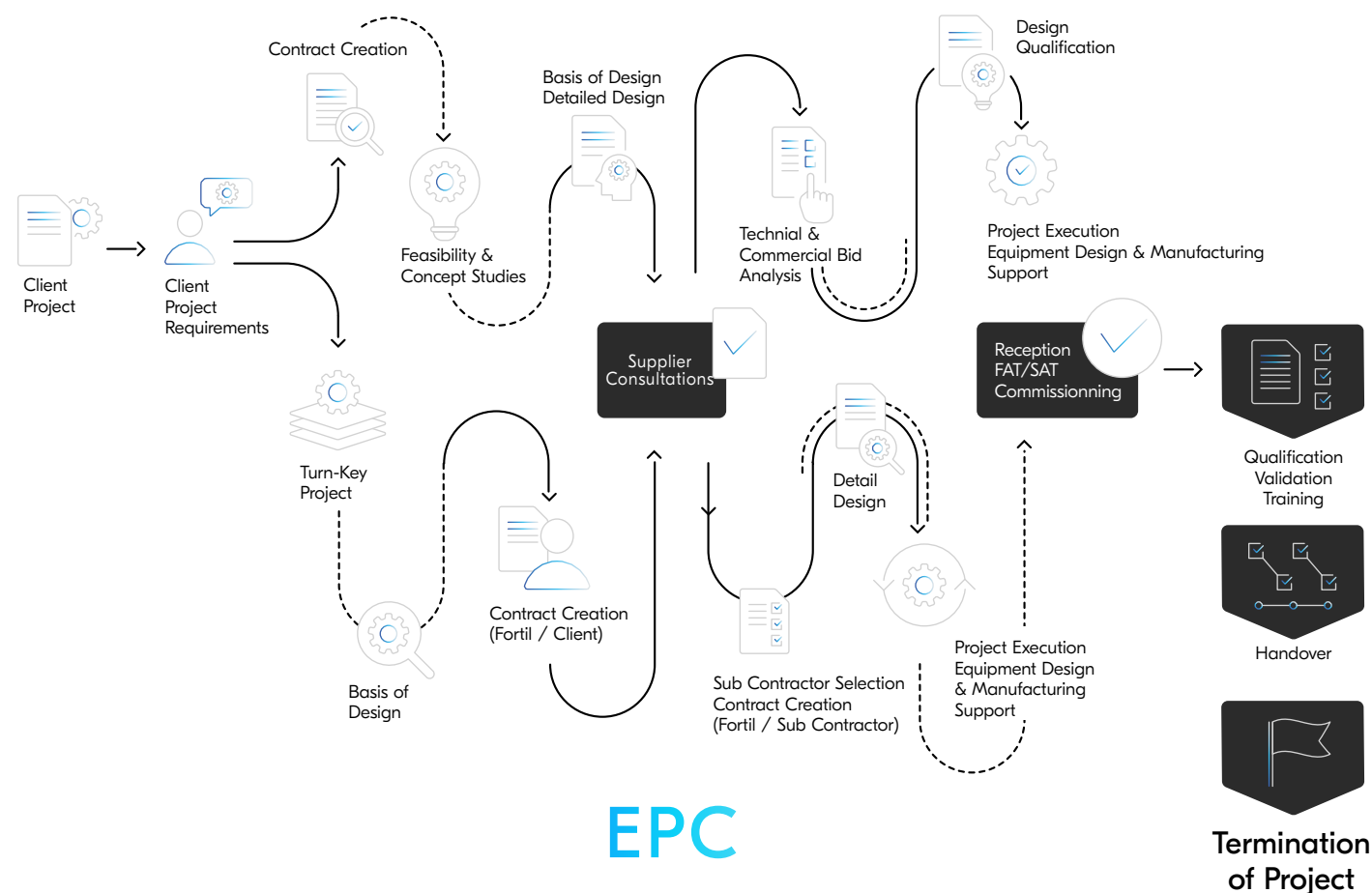
Qhses & Compliance



The health sector is constantly developing, with new opportunities opening up as a result of new technologies and scientific innovation. We can help you anticipate these changes before they happen and we provide technical expertise that conforms with QHSES and which is adapted to these developments. Indeed, quality control through putting in place robust processes and qualification/validation strategies that have been adapted, makes it possible to guarantee success for your plans. In order to guarantee the quality of the service given to our clients, we develop tools to control the security, safety and environment aspects in our techniques.

- Qualification, tests and validation
- Operational, product and supplier quality
- Quality and regulating systems
- Auditing, certifying and training
- HSE
- Cybersecurity
- ISO 9001, ISO 13485, ISO 22716 Standards
- Frameworks and regulations : cGMP, 2017/745/UE, 2017/746/UE.
- Quality control

EPCM



EPC

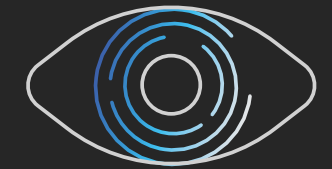




Support exploitation & distribution

The optimisation of production, industrial installation performance requires the careful design of operational and distribution support systems. We pilot and schedule technical shutdowns for our clients. Operational support enables us to provide continual improvement, lean management and industrial reliability which then allows us to guarantee that you have optimal production.

- Industrial installation
- Production optimisation
- Maintenance and metrology methods
- Logistical and distribution chain



Digital Transformation

Our services require all developments to be linked to digital transformation and industry 4.0. We apply data integrity maintenance measures for :

- Software development
- DevOps / Integration
- Data & Artificial Intelligence (Deep learning and predictive maintenance)
- Process digitalisation
- RPA

Activity rests on the use of control/command applications such as PCS7 (API Siemens), DeltaV (API Emerson), Unity Pro (API Schneider) and supervision applications WinCC, InTouch, PCVue32, RSVIEW, etc.



On Site Contracting

We offer you our expertise by offering intellectual or material services, intervening in various stages of the project.

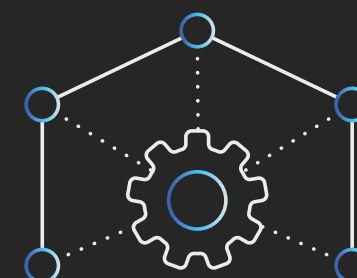
- Skill choice
- Unique contract for each service
- Flexibility on resources



Technical Expertise Hub

A multidisciplinary team of employees will be dedicated to your project, as part of clearly defined service levels and performance indicators.

- Service continuity
- Management of skills and resources
- 100% FORTIL piloting
- Simplification of project management and follow-up



Service Hub

If you have any specific recurring needs, we can industrialise these while offering full control of costs and scheduling.

- Flexibility / versatility
- Overload / underload management
- Productivity optimisation
- Breakdown of activity

Work Package

Does your project require fully outsourced management from our engineering offices? Through EPC (turnkey) or EPCM (project management) contracts, the study and execution of the project is guaranteed by our teams via comprehensive engineering, purchasing and construction services.

- Quality / cost / time control
- Commitment to the result
- Expertise centre





Our team is made up of experts who know about all the technologies used at present for designing the ideal solution for our clients. Our know-how enables us to take care of your projects from user requirements (URS), preliminary draft stages (feasibility, APS, APD) and undertaking all of the works, right up to handover and qualification, training and property transfer for unit start-up. We undertake operational support work for maintenance, follow-up and production support work. With regulatory demands that are increasingly placed in a framework, we undertake quality assurance for the project. We are the guarantors for the quality of the project, and we ensure conformity with the regulations of our clients' projects.

Our skills and our knowledge in all health industry domains enable us to create a service that has been adapted and which provides added value to our clients. When we talk about project works, we design, we develop and we test the systems in order to provide a tailor-made service for all the specific stages of the production cycle for your products.





Our HR vision



An organisation modelling friendly competition and sharing of responsibilities



We think of our organisation as a system in which each person can reach their potential without being held back by someone else's ambition. To model this, we value relationships and not hierarchical roles.

Communication is an essential part of our performance and it highlights the advantages of a quality interpersonal agreement by the ability to react, the clarity and the trust that it brings. Each job role is a pillar in the system which has at its centre technical expertise which we mobilise to bring client satisfaction.

Our sociogram

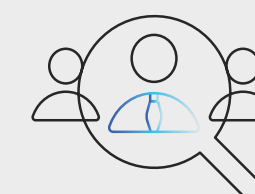
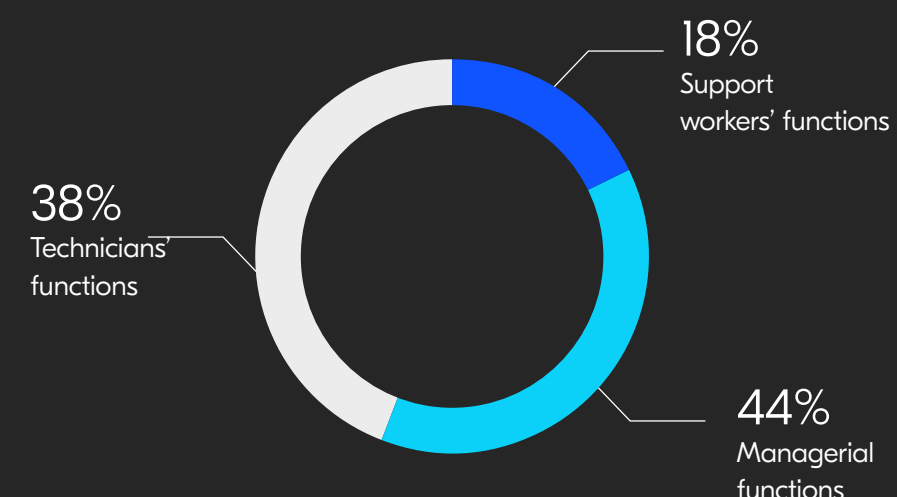


Committed Stakeholders : Entrepreneurial engineers

What gives the model its strength is how we attribute to our employees the ability to initiate development strategies and to engage with them on the results. Nothing in our HR policy has been more

effective than giving responsibility to a paid associate. All of our shareholders are active paid associates of the group with the aim of achieving a system of shared governance.

Breakdown of group shareholders



Our ambitious recruitment plans combine quality and quantity. Demand is high since the possibilities are endless. Joining us gives meaning to your work, because we have the resources of a financially healthy business and the agility of a start-up.



A socially responsible group

For a company to enjoy sustainable prosperity, it must strive to ensure greater sharing of results and equality of opportunities. Fortil is fully committed to these goals. Our aim is to positively impact Fortil's internal and external ecosystems via an ethical and transparent organisation, increasing the proportion of shareholding employees to 30%, offering an endowment fund geared towards equal opportunities and securing our employees' personal interests.

Our ecosystem is resolutely focused on our CSR strategies. Since the beginning, we have chosen an approach with long-lasting development and ethical business. In order to bring about this concept, and following an audit, in 2020 and in 2021 we received the SILVER medal by Ecovadis, placing us in the top 13% of the highest achieving

businesses in the world. Beyond the directives that we set daily, we have wanted to reinforce our engagement by taking part in several external bodies that promote equal opportunities, inclusion and environment.

FACE
Les entreprises contre l'exclusion

PAQTE
LE PACTE AVEC LES
QUARTIERS POUR TOUTES
LES ENTREPRISES



Fortil Endowment Fund

We want to have a positive impact on our internal and external ecosystems. Our mission is equal opportunities. The Fortil group takes responsibility and in 2020 created its own Endowment fund.

This structure allows us to fund community projects that promote education and inclusion. In its honour, 10 associations work to give young people and those far from employment, a future perspective.

Although it was 90% financed by FORTIL, the Endowment fund has, in 2021, brought together clients and suppliers who wish to take part in the initiative with the aim of multiplying the impact of these community projects by accompanying even more beneficiaries.



Our brand
dedicated to the
health industry.

fortil Care

fortil

More about
our model

fortil.group

Find out about our
social actions

fondsdedotationfortil.com

Follow us
on LinkedIn

linkedin.com/company/fortil